

MAX and WIZ interferometers



Single fiber



Multi-fiber



Phase shift, white light



Scratch detection



Auto focus



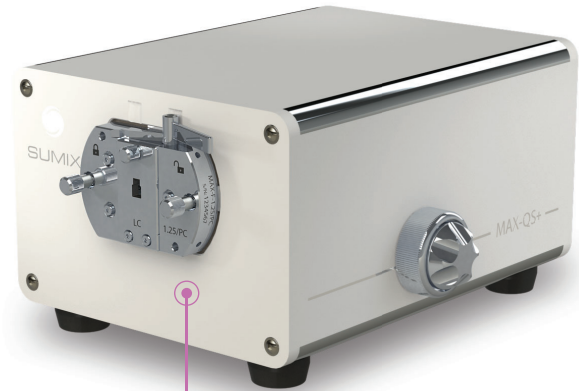
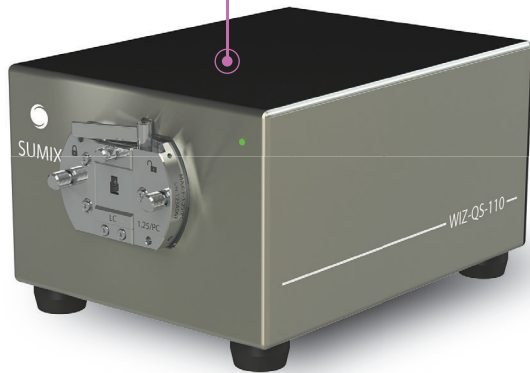
Industry standards



PASS/FAIL verdict

WIZ-QS-112

for single fiber connectors



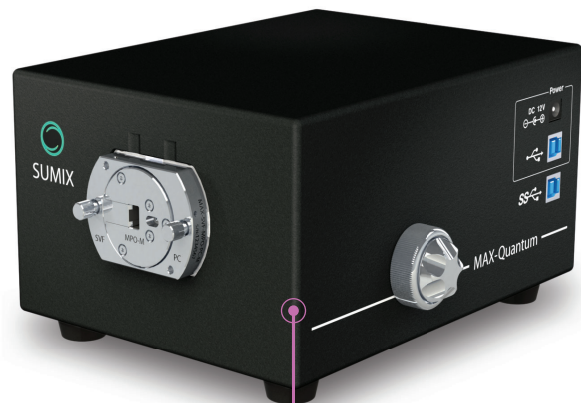
MAX-QS-H

for single fiber connectors



MAX-QM-H

for single and multi-fiber connectors



MAX-Quantum

for single and multi-fiber connectors



	Inspection of Single Fiber		Inspection of Single and Multi-Fiber	
	WIZ-QS-112	MAX-QS-H	MAX-QM-H	MAX-Quantum
Inspection objects:				
Single Fiber Patchcords	●	●	●	●
MIL Spec Termini	●	●	●	●
Cleaved bare fiber	●	●	🎯	●
SMA	🎯	🎯	●	●
MT, MPO 12/16, Cleaved ribbon			●	●
Application:				
Production, QA & Field	●	●	●	●
Laboratories		●		●
Features and Specifications:				
Anomalies detection		●		●
Whitelight mode	●	●	●	●
Optical resolution, μm	2.5	1.1	2.2	1.47
Field of view, mm	1.65×0.93	1.53×0.86	7.68×4.32	6.0×4.4
Measurement time	1.3 sec	2 sec	3 sec (MT12), 1 sec (SF)	7 sec (MT12), 1.4 sec (SF)
Scan range for fiber height, μm	100	100	100	100
Compact size	●	●	●	●
Calibration-free upon fixture change	●	●	●	●
Auto-focus	●	●	●	●
Data-base connectivity	●	●	●	●
Side+Front View compatibility			●	●
Possibility of polarity check			●	●
Price	★	★★	★★★	★★★★



Industry-leading inspection software

The software is provided with predefined Pass/Fail criteria per IEC standards or you can set your own parameters for specific applications (e.g. when launching a new product).

MaxInspect™ software provides the following **tools for integration** into customer's manufacturing systems:

- Export of results to Excel/CSV files;
- Direct connection to customer's SQL database;
- MaxInspect™ WebSocket API;
- Centralized MaxInspect™ database.



3532 Seagate Way, Suite 100, Oceanside, CA 92056, USA

www.sumix.com

E-mail: info-team@sumix.com

Tel.: +1 (877) 233-3385